

Specifications

備注 (Remark)

1. 材料 (Material)

膠芯: PA9T/LCP+30%G.F UL94V-0, 顏色: 黑色

Housing: PA9T/LCP+30%G.F UL94V-0, Color: Black

端子: 黃銅

Contact: Brass

2. 特性 (characteristics):

額定電流: 1.00AMP

Rating Current: 1.00AMP

接觸阻抗: 20mΩ Max

Contact Resistance: 20mΩ Max

絕緣阻抗: 1000MΩ Min

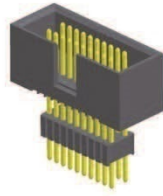
Insulating Resistance: 1000 MΩ Min

耐電壓: AC 500V/分鐘

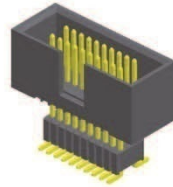
Withstanding Voltage: AC 500V/Minute

溫度範圍: -40° C to +105° C

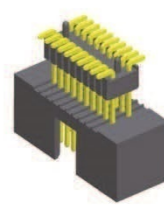
Temperature Range: -40° C to +105° C



B127X254-23PXXXXXX1

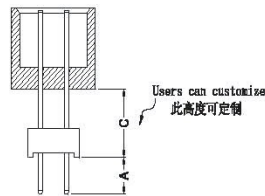
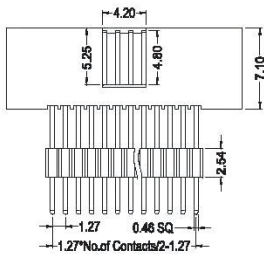
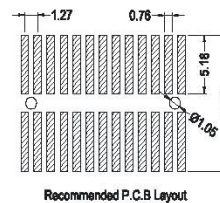
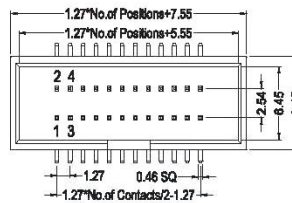
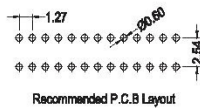
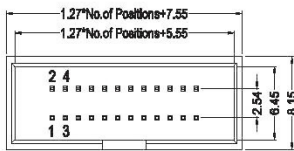
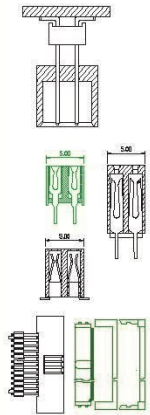


B127X254-23SXXXXXX1

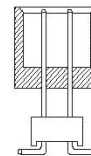
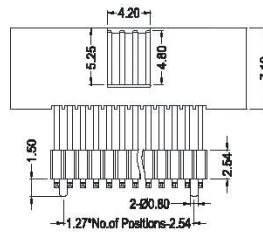


B127X254-23SXXXXXX2

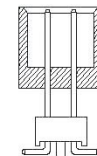
Mating With/配對母座:



Users can customize
此高度可定制



TYPE 1



TYPE 2

Users can customize
此高度可定制

Dimension antitheses list		
ITEM	Dim A	Dim C
Standard	3.20	
Alternate		

Dimension antitheses list		
ITEM	Dim W	Dim C
Standard	7.50	
Alternate		

BOX HEADER B

B127X254-23

X

XX

XX

X

X

X

Contact Shape:
P: Straight
S: SMT

No. Of Pins
04~100P

Contact Plating
Full Of Gold
C0=0.8u"
~
C9=30u"
S1=Ordinary Tin Plated
S2=Matte Tin Plated
S3=Tin-plated High-temperature

Insulator Colour
B: Black
G: Grey

Packing
A: PE Bag
R: Tape & Reel
T: Tube
D: Tube+CAP
E: Tray

Journal Number
1: Type1 (without Post)
2: Type2 (with Post)